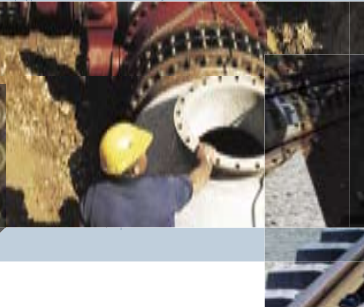
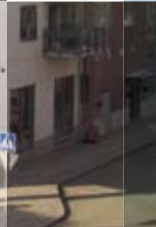
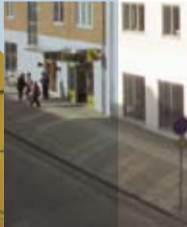


CONSOLIS IS A LEADING EUROPEAN MANUFACTURER OF PREFABRICATED CONCRETE PRODUCTS, providing comprehensive solutions for building and infrastructure projects. With as much as 100 years of experience, Consolis companies offer a wide range of products and services, including project design and implementation.

CONSOLIS OPERATES OVER 100 PLANTS IN 20 COUNTRIES stretching from Scandinavia to North Africa and from Western Europe to the Baltic countries and Russia. Its net sales exceed 1 billion euros.



With a workforce of over 8,000 persons, Consolis pays special attention to efficient production processes and long product life-span, and is thus dedicated to reducing the environmental burden.

FOLLOWING THE MERGER OF FINNISH CONSOLIS AND FRENCH BONNA SABLA IN 2005, the new Consolis offers its customers the most advantageous solutions for building and civil works projects with over 100,000 references. Products range from floor and wall elements to railway sleepers, infrastructural products, sanitation pipes,

and structures for bridges and tunnels. In addition, Consolis provides services from the design of elements and buildings to actual construction projects.

FURTHER EXPANSION OF CONSOLIS WILL COME PRIMARILY IN EUROPE through growth in existing markets, but also by entering new ones. External growth will complement organic growth. At the same time, profitable growth is only possible by successfully integrating the companies in the new Consolis and by leveraging cross-selling and synergies across the organisation.

But most of all, success will depend on a total commitment to customer satisfaction.

CONSOLIS IN BRIEF

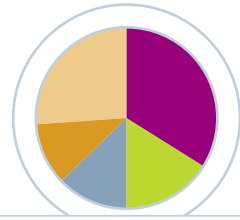


CONSOLIS GROUP Key Figures 2003 - 2005

	2003	2004	2005
Net sales M€	954	1 011	1 125
EBITDA M€	93	82	98
Total assets M€	n/a	n/a	1 000
Capital expenditure M€	46	42	43
Personnel	8 005	7 904	8 130

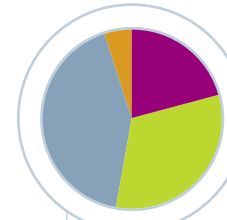
Consolis major shareholders are Industri Kapital and ABN Amro Capital (70%) together with Management (30%).

NET SALES by branch 2005



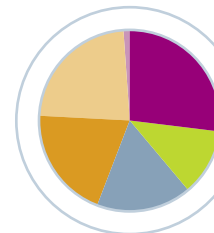
- SCANDINAVIA 34%
- WESTERN EUROPE CONSTRUCTION 16%
- BALTICS AND EASTERN EUROPE 13%
- SOUTHERN AREAS & RAILWAY 11%
- WESTERN EUROPE CIVIL WORKS 26%

NET SALES by segment 2005



- RESIDENTIAL BUILDINGS 21%
- NON-RESIDENTIAL BUILDINGS 32%
- INFRASTRUCTURE AND CIVIL WORKS 42%
- ENGINEERING & OTHERS 5%

PERSONNEL by branch 2005



- SCANDINAVIA 27%
- WESTERN EUROPE CONSTRUCTION 12%
- BALTICS AND EASTERN EUROPE 17%
- SOUTHERN AREAS & RAILWAY 20%
- WESTERN EUROPE CIVIL WORKS 23%
- OTHERS 1%

CONSOLIS

IT Tower, Avenue Louise 480
BE-1050 Brussels - Belgium

Tel.: +32 2 290 3600
Fax: +32 2 290 3633
Email: info@consolis.com

www.consolis.com



CONSOLIS HEAD OFFICE

IT Tower, Avenue Louise 480
BE-1050 Brussels - Belgium
Phone +32 2 290 3600
www.consolis.com

CONSOLIS SAS - BONNA SABLA FRANCE

Tour Ariane, 5 place de la Pyramide
FR-92088 Paris
La Défense Cedex
France
Phone+33 1 46 53 24 00

CONSOLIS OY AB

Äyritie 12 b
FI-01510 Vantaa
Finland
Phone +358 20 577 577

CONSOLIS TECHNOLOGY OY AB

Äyritie 12 b
FI-01510 Vantaa
Finland
Phone +358 20 577 577

BELGIUM

TUBOBEL SA
Albertkade 4 Ravenshout 4450
BE-3980 Tessenderlo
Phone +32 13 67 07 10

CZECH REPUBLIC

DYWIDAG PREFA A.S.
Jedličkova 1190 / 1
CZ-28922 Lysá nad Labem
Phone +420 325 510 020
www.dywidag.cz

EGYPT

ECPC SAE
Egyptian Company for
Prestressed Concrete
89 el Merghany Street
EG - Heliopolis
Phone +20 2415 7304

ESTONIA

AS E-BETOONELEMENT
Tammii tee 51, Harku
EE-76902 Harju maakond
Phone +372 6 712 500
www.betoonelement.ee

AS CES

Roosikrantsi 11
EE-10119 Tallinn
Phone +372 667 6280

FINLAND

PARMA OY
P.O. Box 76
FI-03101 Nummela
Phone +358 20 577 5500
www.parma.fi

ELEMATIC OY AB

P.O. Box 33
FI-37801 Toijala
Phone +358 3 549 511
www.elematic.com

PARASTEK OY AB

Äyritie 12 b
FI-01510 Vantaa
Phone +358 20 577 5180

FRANCE

GRUPE BONNA SABLA
Tour Ariane, 5 place de la Pyramide
FR-92088 - Paris
La Défense Cedex
Phone+33 1 46 53 24 00
www.bonnasabla.com

GERMANY

DW BETON GMBH
Fabrikstrasse 3
DE-31737 Rinteln
Phone +49 5152 5255 0
www.dw-beton.de

INDONESIA

BONNA INDONESIA B.T.
Alia Building 5th floor
JL.M.Ridwan Rais 10-18
ID-10110 Jakarta Pusat
Phone +62 21 386 7679

ITALY

BONNA ITALIA SRL
Via Alberotanza, 5
IT-70125 Bari
bonnaitalia@libero.it

LATVIA

SIA CONSOLIS LATVIJA
22 Getlinu Street
Stopini district
LV-2130 Riga
Phone +371 704 8300
www.consolis.lv

LITHUANIA

BETONIKA UAB
Naglio 4A,
LT-52367 Kaunas
Phone +370 37 400 100
www.betonika.lt

MOROCCO

SATEBA MAROC SA
Usine TBA ONCF
PK 5.5 Boulevard Moulay Ismail
MA - Casablanca
Contact Sateba France -
Pierre Mille,
Phone +33 6 03 26 19 54
p.mille@sateba.com

THE NETHERLANDS

VBI VERENIGDE BOUWPRO-
DUKTEN INDUSTRIE BV
P.O. Box 31
NL-6850 AA Huissen
Phone +31 26 379 7979
www.vbi.nl

SPANBETON BV

P.O. Box 5
NL-2396 ZG
Koudekerk aan den Rijn
Phone +31 713 420 200
www.spanbeton.nl

NORWAY

SPENNCON AS
Industriveien 2
NO-1337 Sandvika
Phone +47 6757 3900
www.spenncon.no

POLAND

CONSOLIS POLSKA SP. Z O. O.
ul. Przemyskowa 40
PL-97-350 Gorzkowice
Phone + 48 44 732 73 00
www.consolis.pl

PORTUGAL

SATEPOR
Edificio Coopali
Rua José Afonso, n° 4C,
1° andar Espaço I
PT - 1600-130 Lisbon
Phone : +351 217 200 580
satepor.sede@satepor.pt

RUSSIA

CONSOLIS RUSSIA/
ZAO PARASTEK BETON
Leningradsky prospect 37A
building 14/1
RU-125167 Moscow
Phone +7 495 789 89 03
www.consolis.ru

SPAIN

STF-SOCIEDAD ANÓNIMA
ESPAÑOLA TUBOFABREGA
Calle Triana n° 42
ES-28016 Madrid
Phone +34 91 345 3596
www.tubofabrega.es

SWEDEN

STRÅNGBETONG AB
Box 858
SE-131 25 Nacka
Phone +46 8 615 82 00
www.strangbetong.se

SWITZERLAND

BONNA GENEVE SA
8 rue Saint Léger
Case Postale 24
CH-1211 Geneve 4
Phone +41 22 312 31 23

TUNISIA

GRUPE BONNA TUNISIE
58 avenue Habib Bourguiba
TN-2033 Megrine
Phone +216 71 434 455

UNITED KINGDOM

STANTON BONNA
CONCRETE LTD.
Littlewell Lane
Stanton-by-Dale Ilkeston
UK-Derbyshire DE74QV
Phone +44 115 944 1448
www.stanton-bonna.co.uk

● Offices and plants
● Commercial contacts



COMPANY LIST



→ IMPLEMENTING CONCRETE SOLUTIONS FOR THE WORLD

CONSOLIS